



# NOTICE OF RACE

# 2017

INTERNATIONAL 420 CLASS WORLD CHAMPIONSHIP  
INTERNATIONAL 420 CLASS LADIES WORLD CHAMPIONSHIP  
INTERNATIONAL 420 CLASS U17 WORLD CHAMPIONSHIP  
**26 December 2017-3 January 2018 - FREMANTLE, AUSTRALIA**

**Venue:** Fremantle, Perth, Australia  
**Organizing Authority:** Fremantle Sailing Club  
**In Partnership with:** Australian Sailing, Australian and WA 420 Class Association, and the International 420 Class Association

*[NP] denotes that a breach of this rule will not be grounds for protest by boat.*

*[DP] denotes a rule for which the penalty is at the discretion of the International Jury and may be less than disqualification.*

*[SP] denotes a rule for which a standard penalty may be applied by the race committee without a hearing.*

## 1. RULES

- 1.1 The regatta will be governed by the Rules as defined in the Racing Rules of Sailing (RRS).
- 1.2 RRS Appendix P, Special Procedures for Rule 42, will apply.
- 1.3 No National Authority prescriptions will apply.
- 1.4 If there is a conflict between languages the English text will take precedence.

## 2. [DP] [NP] ADVERTISING AND BOW NUMBER

- 2.1 Boats will be required to display bow numbers and/or advertising chosen and supplied by the Organizing Authority.
- 2.2 In accordance with World Sailing (WS) Regulation 20.4.3, competitors aboard the boats ranking first, second, and third in the series at the beginning of that day shall wear yellow, blue and red bibs respectively while racing. The bibs will be provided by the Organizing Authority.
- 2.2.1 [SP] Boats are required to display national flags on their mainsail according to Class rule C.10.3.1.(e). Approved national flag manufacturers are listed at: [http://www.sailing.org/tools/documents/ISAFFlagSupplierV5-\[20736\].pdf](http://www.sailing.org/tools/documents/ISAFFlagSupplierV5-[20736].pdf)



**WESTERN  
AUSTRALIA**  
EXPERIENCE  
EXTRAORDINARY



### 3. EVENTS FORMAT

Each event will consist of a qualifying series and a final series.

**3.1 Qualifying series** – 6 races scheduled for each event, teams will be divided into fleets.  
The number of fleets will be as defined below:

- One fleet up to 50 boats,
- Two fleets from 51 to 100 boats,
- Three fleets for more than 100 boats.

The numbers of fleets may be changed by the Organizing Authority when the total number of entries is close to the limits stated in this Notice of Race.

**3.2 Final series** – 6 races scheduled for each event, teams in the qualifying series will be divided into final fleets according to the final scores of the qualifying series.

There will be the same number of fleets as in the qualifying series.

The fleets will have approximately the same number of teams in each.

The Gold fleet will consist of the first part of the final scores of the qualifying series, Silver fleet of the second part, and so on.

**If there are fewer than 50 entries at an event, then the championship will be competed in one fleet (single series) with 12 final races.**

### 4. EVENTS SCHEDULE

Day 1 – 26 Dec 2017	Registration and equipment inspections	09:00-19:00
Day 2 – 27 Dec 2017	Registration and equipment inspections	09:00-19:00
Day 3 – 28 Dec 2017	Registration and equipment inspections Practice Race: warning signal Opening Ceremony	09:00-18:00 13:30 18:30
Day 4 – 29 Dec 2017	Qualifying series	13:00
Day 5 – 30 Dec 2017	Qualifying series	13:00
Day 6 – 31 Dec 2017	Qualifying series	13:00
Day 7 - 1 Jan 2018	Qualifying/Final series	13:00
Day 8 – 2 Jan 2018	Qualifying/Final series	13:00
Day 9 – 3 Jan 2018	Qualifying/Final series Prize Giving and Closing Ceremony	11:00 18:30

No warning signal will be given after 15:30 on 3 January 2018

### 5. ELIGIBILITY

**5.1** The championships are only open to International **420** dinghies.

**5.2** World Sailing (WS) eligibility according to **WS Regulation 19** is required of all athletes.

**5.3** Each competitor shall be a member of their National Class Association and, if relevant, of their National Authority.

- 5.4 Each competitor shall be entered by their National **420** Class Association or by their Federation/National Authority if such an Association does not exist.

## 6. ENTRIES AND RESTRICTIONS

### 6.1 ~~WORLD CHAMPIONSHIP~~

~~Entries for the World Championship shall be limited in accordance with the International 420 Class Association Guidelines: 7 boats for each country and 14 boats for the host country in each championship.~~

~~Only men or mixed teams are authorised to enter the World Championship.~~

### 6.2 ~~LADIES WORLD CHAMPIONSHIP~~

~~Entries for the Ladies World Championship shall be limited in accordance with the International 420 Class Association Guidelines: 7 boats for each country and 14 boats for the host country in each championship.~~

~~Only ladies teams are authorised to enter the Ladies World Championship.~~

### 6.3 ~~U17 WORLD CHAMPIONSHIP~~

~~Entries for the U17 World Championship shall be limited in accordance with the International 420 Class Association Guidelines: 6 boats (3 boats men or mixed + 3 boats ladies) for each country and 12 boats (6 boats men or mixed + 6 boats ladies) for the host country.~~

**There is no quota or restriction at the 2017 420 World Championship, Ladies World Championship or U17 World Championship.**

U17 team is defined as a team who shall not have attained their 17<sup>th</sup> birthday on or before 31.12.2017 (i.e. born after 31 December 2000) for both members of the team.

All entries to the U17 World Championship will race in one fleet. If there are less than 30 entries the U17 fleet will be included in the respective World Championship or Ladies World Championship fleet.

## 7. REGISTRATION

All entries shall be made on-line at the International 420 Class Website: <http://2017worlds.420sailing.org> before **26 November 2017**.

**Please ensure that the on-line entry form is printed, the required signatures obtained and the completed form brought to Registration.**

Entry fee per boat: **EUR300**

Entry fees shall be paid in EUROS by swift to:

**International 420 Class Association**

**Account No: 210 - 0467 - 180 - 80**

BNP Paribas Fortis Nieuwpoort-Centrum, Langestraat 56,

B-8620 Nieuwpoort, BELGIUM

**IBAN: BE47 2100 4671 8080**

**SWIFT CODE: GEBABEBB**

Before: **26 November 2017**

**ALL BANK TRANSFERS SHOULD BE CLEARLY ANNOTATED WITH THE NAME OF THE COUNTRY, THE EVENT AND THE SAIL NUMBERS AND/OR NAMES OF THE COMPETITORS.**

**Each entry and fee not received by 26 November 2017 may not be accepted and shall be subject to a supplementary fee of EUR75.**

Entry fees to be paid by coaches, team leaders and representatives from participating nations are **EUR75 per person** and will be paid direct to the Organizing Authority at registration.

## 8. DISCLAIMER OF LIABILITY

Competitors participate in the regatta entirely at their own risk. See RRS 4, Decision to Race. The Organizing Authority and all parties involved in the regatta organization will not accept any liability for material damage or personal injury or death sustained in conjunction with or prior to, during, or after the regatta.

## 9. [NP] [DP] EQUIPMENT INSPECTION - CERTIFICATES

A Technical Committee shall be appointed in accordance with RRS 92.

All boats shall be inspected before racing in the days specified in this Notice of Race. A boat will be eligible to compete and complete event registration after Equipment Inspection has been completed.

Each boat shall have a valid Measurement certificate, accompanied by the hull measurement form (IMF), both of which must be presented during the pre-race inspection. Only original or certified true copies of these documents shall be accepted. Event charter boats are excluded from this obligation, but they must be accompanied by original or certified true copies of their measurement form.

Sails shall be certified and marked by an official measurer before being presented for inspection. No sail shall be accepted for inspection if it is not certified according to the class rules, and no member of the equipment inspection team shall certify sails on the spot.

Random equipment checks may be made at any time during the Championships

## 10. SAILING INSTRUCTIONS and EQUIPMENT INSPECTION INSTRUCTIONS

The Sailing instructions will be available at the race office for each competitor and Team Leader after the final country's registration has been completed. The Equipment Inspection Instructions will be available for each competitor and Team Leader at the race office at registration.

## 11. LADIES TEAMS IDENTIFICATION

Mainsails used in the Ladies World Championship shall carry a red rhombus (length of diagonals minimum 250mm) above the top batten pocket on both sides. The position should be approximately in the centre of the triangle formed by the top batten and the mainsail head.

## 12. [NP] SAFETY REGULATIONS

Competitors shall wear a personal flotation device at all times when afloat in accordance with Class rule **C.3**.

Wetsuits and dry suits are not considered as personal flotation devices.

## 13. COURSES

The courses will be trapezoid.

The target time of a race will be **45** minutes.

## 14. JURY, PROTESTS and PENALTIES FOR BREAKING RULES OF PART 2

An International Jury will be appointed in accordance to **RRS 91(b)**. Its decisions will be final as provided in **RRS 70.5**.

## 15. SCORING

**15.1 RRS Appendix A** will apply.

### 15.2 Qualifying series:

All 6 qualifying races must be completed to constitute the qualifying series.

The Championships will be valid if, at least, the qualifying series are completed.

All race scores from the qualifying series will be carried forward to the final series.

### 15.3 Final series

There will be 6 races in the final series.

### 15.4 Single series

There will be 12 final races in the single series.

### 15.5 Discards

- When fewer than 5 races have been completed, a boat's series score is the total of her race scores,
- When 5 or more races have been completed, a boat's series score is the total of her race scores excluding her worst score,

No more than **three** races can be sailed each day.

## 16. PRIZES

The first **three** teams in the ranking list each fleet shall be given a trophy.

The first **three** teams in the World Championship **gold fleet** ranking list shall receive a **Gold, Silver and Bronze** medal.

The first **three** teams in the Ladies World Championship **gold fleet** ranking list shall receive a **Gold, Silver and Bronze** medal.

The first **three** men or mixed teams in the U17 World Championship ranking list shall receive a **Gold, Silver and Bronze** medal.

The first **three** ladies teams in the U17 World Championship ranking list shall receive a **Gold, Silver and Bronze** medal.

The first **Junior** team in the World Championship ranking list shall receive a medal and the John Merricks Trophy (both members of the team shall be aged 18 or under as at 31 December 2017).

The first **Junior** team in the Ladies World Championship ranking list shall receive a medal and the John Merricks Trophy (both members of the team shall be aged 18 or under as at 31 December 2017).

**World Championship International 420 Class Challenge Cup** - this trophy will be presented to the gold medallist in the World Championship.



**International 420 Class Ladies World Championship Challenge Cup** - this trophy will be presented to the gold medallist in the Ladies World Championship.

**Huck Scott Memorial Trophy** - this trophy is awarded to the youngest boat team competing in either the World Championship, the Ladies World Championship or the U17 World Championship. The lowest combined age of the team at the end of the year will be used.

**William Sanchez Trophies (2)** - these trophies are awarded to the highest placed boat, both aged 16 or under, at the end of the year, one for the World Championship and one for the Ladies World Championship.

**Francis Mouvet Trophy** - This trophy will be awarded to the nation who has the highest placed 3 boats in the World Championships using both the World Championship and Ladies World Championship.

The prizes are given to both members of a team.

## 17. TITLES

The title of **International 420 Class World Champion** will be awarded to the first team in the ranking list of the World Championship.

The title of **International 420 Class Ladies World Champion** will be awarded to the first team in the ranking list of the Ladies World Championship.

The title of **International 420 Class U17 Men World Champion** will be awarded to the first men/mixed team in the ranking list of the U17 World Championship.

The title of **International 420 Class Ladies U17 World Champion** will be awarded to the first ladies team in the ranking list of the U17 World Championship.

The title of **International 420 Class Junior** will be awarded to the first junior team in the ranking list of the World Championship.

The title of **International 420 Class Junior Ladies** will be awarded to the first junior ladies team in the ranking list of the Ladies World Championship.

A junior team is defined as a team who shall not have attained their 19<sup>th</sup> birthday on or before 31.12.2017 (i.e. born after 31 December 1998) for both members of the team.

U17 team is defined as a team who shall not have attained their 17<sup>th</sup> birthday on or before 31.12.2017 (i.e. born after 31 December 2000) for both members of the team.

## 18. COACH BOAT AND SUPPORT PERSONAL

All coach and support boats shall display the 3 letter national code of their W.S. Member National Authority at all times while afloat clearly visible from both sides of the boat and the number code of the organizing authority. The minimum height for the letters shall be 200 mm.

All registered support boats shall act as rescue boats in case of need (more details in Sailing Instructions).

All support boats shall have third party liability insurance with a minimum cover of **EUR5,000,000** per event or equivalent. A certificate of such insurance shall be shown during registration.

## 19. INSURANCE

Each competitor shall produce at registration an evidence of valid third party insurance with a minimum cover of **EUR5,000,000** or the equivalent in other currencies.

Each participant warrants the suitability of his or her boat for the event.

## 20. RIGHTS TO USE NAMES and LIKENESSES

By participating in the regatta competitors automatically grant to the International 420 Class Association and to the Organizing Authority and their sponsors, the right in perpetuity to make, use and show, from time to time at their discretion, any motion pictures and live, taped or filmed television and other reproductions of the athlete during the period of the competition without compensation.

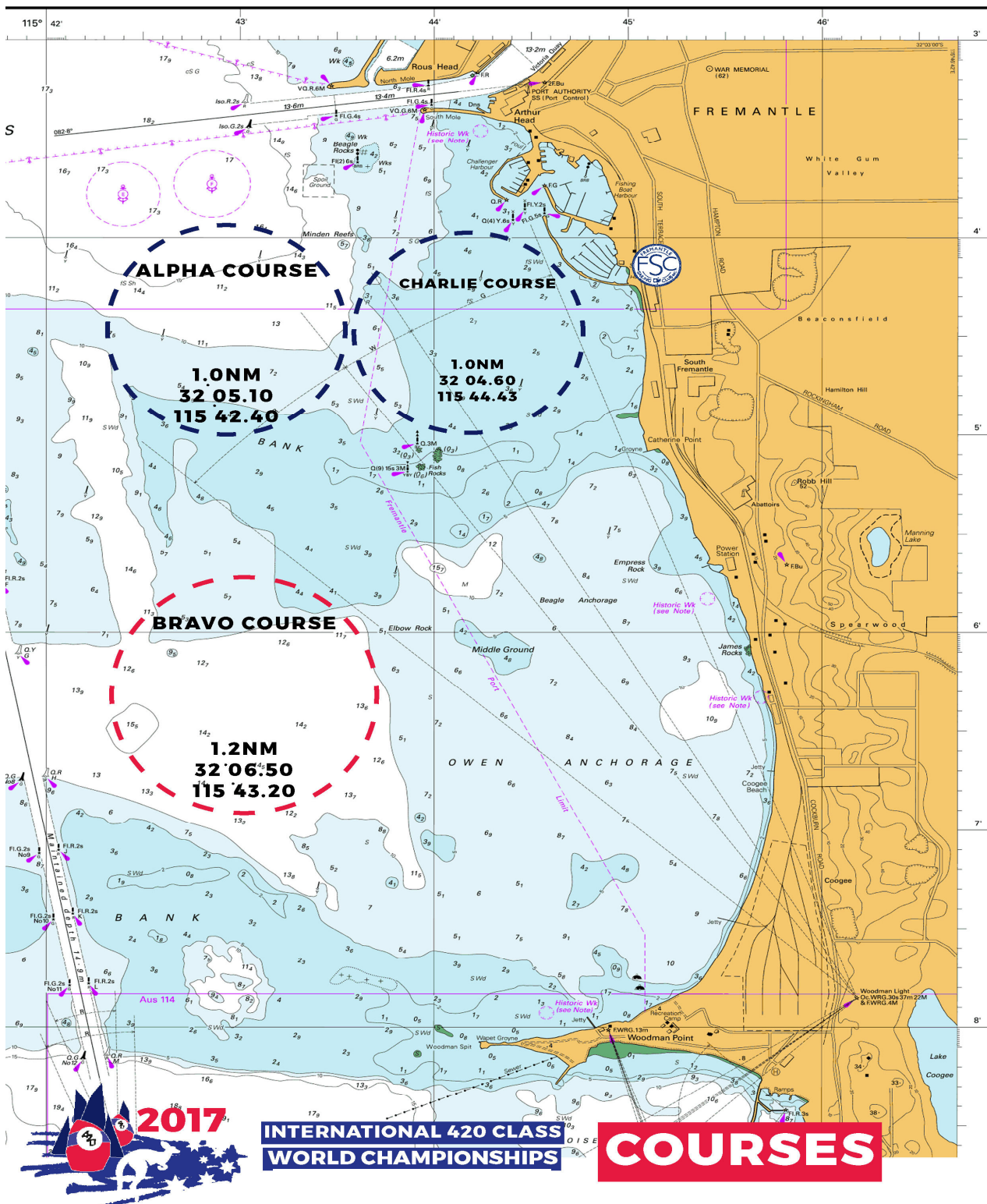
## 21. [DP] [NP] CAMERAS AND ELECTRONIC EQUIPMENT

Boats may be required to carry cameras, sound equipment or positioning equipment as specified by the Organizing Authority.

# APPENDIX A - RACING AREA

## RACING AREA

Two of the three course areas shown below will be used each day.





## GENERAL INFORMATION (not part of Notice of Race)

**About the Club/Venue:** Fremantle Sailing Club (FSC) prides itself on more than 100 years of history and heritage. FSC is the largest sailing club of its kind in Australia and has worked with the Western Australian Government on major national and international yacht races and regattas.

Boasting 677 water berths (with an additional 200 land-based berths), a barbeque area, boat storage, crane, fuelling station, hard-stand, cement launching ramps, sand marina, parking, playground, restaurant, bar, cement rigging areas, grassed rigging areas, sailing school and extensive shower and change facilities, FSC provides state of the art facilities.

**Location details:** Street address: 151 Marine Terrace Fremantle WA 6160.

FSC is located on the edge of the Indian Ocean, approximately 30min south-west of Perth's CBD and approximately 40min from Perth Airport. FSC offers direct ocean access for sailors.

**Venue Opening:** FSC traces its origins back to the late 1800s. The current main clubhouse was opened in 1979 and underwent a four million dollar refurbishment in 2014.

Web: [www.fsc.com.au](http://www.fsc.com.au)

Email: [sailingmanager@fsc.com.au](mailto:sailingmanager@fsc.com.au)

Contact person: Scott Olney

Tel: +61 8 9435 8800

Fax: +61 8 9435 8873

**420 Charter Boats:** FSC has approached three charter businesses who have all been extremely supportive in providing charter boats to FSC for the 2017 International 420 Class World Championship. FSC is in communication with Lukas Formella from BlueBlue to coordinate a full complement of charter boats from three separate suppliers; BlueBlue, Nautivela and Mackay Boats. Charter boat arrangements are yet to be confirmed.

**Shipping:** Fremantle port is well connected to the World. Both roll-on roll-off and container services are provided, with the unloading point being a short 10 minute drive to the facilities of Fremantle Sailing Club.

FSC's connections with local transport companies will enable the smooth transfer of yachts from ship to the sailing venue.

### **How to get to the venue:**

**By Car:** Street address: 151 Marine Terrace Fremantle WA 6160. On-site parking available.

**By Plane:** FSC is approximately a 40 minute drive from Perth International and Domestic Airports.

**By Train:** Fremantle train station is located less than a 5 minute drive from FSC, and provides a direct train line to the Perth CBD with multiple stops along the way. Free-of-charge public CAT Buses linking FSC to Fremantle Train Station depart a round trip every 10 minutes throughout the day.

**Accommodation and Travel:** Fremantle is well used to hosting and accommodating major sailing events, with a choice of hotels, apartments, home stay, B&B and caravan parks all in the vicinity. Fremantle is a city connected to the major metropolis of Perth and the choice of Perth central accommodation is also available, however requires a 30min drive or 40min train trip.

Be. Serviced Apartments – Fully equipped and serviced apartments  
Distance from FSC: 5min drive, 10min FREE CAT bus, or 20min walk  
Website: [www.befremantle.com.au](http://www.befremantle.com.au)

### **Esplanade Hotel Fremantle (Rydges) – 4 ½ star hotel**

Distance from FSC: 2min drive, 5min FREE CAT bus or 15min walk

Website: <http://www.rydges.com/accommodation/perth-wa/esplanade-hotel-fremantle-by-rydges>

### **Coogee Beach Holiday Park (Aspen Parks) – Cabins & caravans**

Distance from FSC: 10min drive

Website: <http://www.aspenparks.com.au/parks/wa/coogee-beach-holiday-park/>

### **Woodman Point Holiday Park – Cabins, caravans & camping**

Distance from FSC: 10min drive

Website: <http://www.aspenparks.com.au/parks/wa/woodman-point-holiday-park/>

### **Houses**

A great website for finding and renting holiday houses throughout Fremantle and Perth is [www.stayz.com.au](http://www.stayz.com.au). This website has many privately owned houses listed for holiday rental.

### **Short Term University accommodation**

Curtin University and University of Western Australia offer short-term accommodation (bed & breakfast, apartments, hotels, residential college accommodation and backpackers accommodation) over the summer period. Both universities are approximately 20 minutes' drive to Fremantle Sailing Club. Please visit their websites for more information:

[www.international.curtin.edu.au/accommodation](http://www.international.curtin.edu.au/accommodation)

[www.housing.uwa.edu.au/off-campus/temporary](http://www.housing.uwa.edu.au/off-campus/temporary)

For more information about accommodation available in Fremantle and Perth, please visit one of the following websites:

[www.experienceperth.com](http://www.experienceperth.com)

[www.fremantlewa.com.au/accommodation](http://www.fremantlewa.com.au/accommodation)

[www.tourism.wa.gov.au](http://www.tourism.wa.gov.au)

[www.wotif.com](http://www.wotif.com)

**Weather and Current:** The waters off Fremantle boast rare and ideal sailing conditions. During month of December the average daily temperatures range between 28-35 degrees Celsius. Particularly during the summer months, the area benefits from consistent, stable and predictable wind patterns.

Generally the mornings experience easterly land breezes varying between 5 to 15 knots, a breeze that is most often replaced by the famous 'Fremantle Doctor', a cooling south westerly sea breeze that ranges in strength between 10 and 20 knots.

These perfect wind conditions are complemented by stable water conditions, created by a line of islands and reefs located off Fremantle. These sheltered waters between the coast and the islands produce an area exceptional for dinghy sailing. The ocean conditions present a low wave 'chop' on a mild swell.

### **Weather Forecast:**

Perth weather forecast: <http://www.bom.gov.au/wa/forecasts/perth.shtml>

Fremantle weather forecast: <http://www.bom.gov.au/wa/forecasts/fremantle.shtml>

Perth wind, swell and tide forecast (including live wind readings at FSC Fish Rocks:

<http://www.seabreeze.com.au/weather/wa/perth>

**The City:** Perth is Australia's fastest growing capital city with a population just over 2 million people. It enjoys a Mediterranean style climate with mild winters and near perfect sunny summers... one of the world's best kept secrets and a must visit destination.

Fremantle, the port at the western edge of the city is a thriving tourist hub with plentiful accommodation, entertainment, cafes, bars and restaurants.

### **Other information:**

**Container storage:** Containers arriving from interstate or internationally can be stored onsite (exact location TBC) and available for continued use as workshops and storage throughout the event. In addition the club has two single point cranes suitable of lifting up to 2,500kg and 6,500kg, and if required our works area has two travel lifts capable of lifting up to 75,000kg.

The port itself is well connected to the World. Both roll-on roll-off and container services are provided, with the unloading point being a short 10 minute drive to the facilities of the Fremantle Sailing Club.

FSC's connections with local transport companies will enable the smooth transfer of yachts from ship to the sailing venue.

**Car Park:** FSC offers spacious on-site car and trailer parking in the hardstand area, main clubhouse and dinghy clubhouse. FSC boasts free car parking with additional free offsite car parks also available on Marine terrace and adjacent to South Beach.

**Insurance:** Sailors can buy insurance cover during registration.

**Sail repair and boat Service:** All regatta support services such as shipwrights, sail-makers and rigging chandleries required for such an event are within walking distance of FSC.

The below five chandleries are within a 5 minute drive from FSC:

- |  |                        |
|--|------------------------|
| • Waterfront ACM: Cnr of Capo D'Orlando Drive and Mews Road      | Phone: +61 8 9335 7766 |
| • Wilsons Marine: On site at FSC                                 | Phone: +61 8 9336 1111 |
| • Boating Hardware ProSail: 6/1 Zeta Crescent, O'Connor WA 6153  | Phone: +61 8 9337 9900 |
| • Yacht Grot: 57 Queen Victoria St, Fremantle WA 6160            | Phone: +61 8 9430 6766 |
| • North Sails WA (sail repairs): 2/24 Mews Rd, Fremantle WA 6160 | Phone: +61 8 9430 5010 |

FSC also has the ability to have on-site pop up stores.